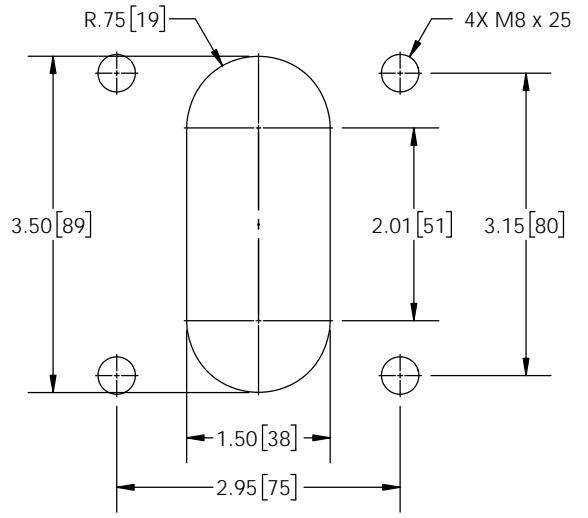
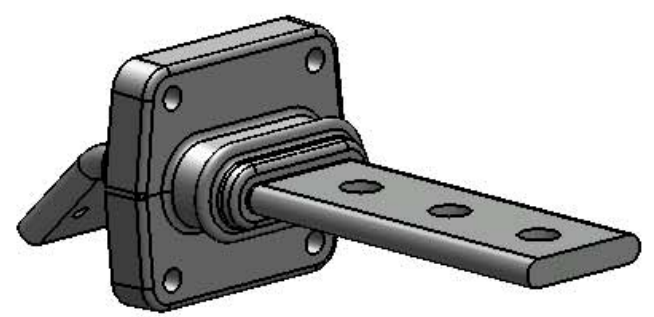
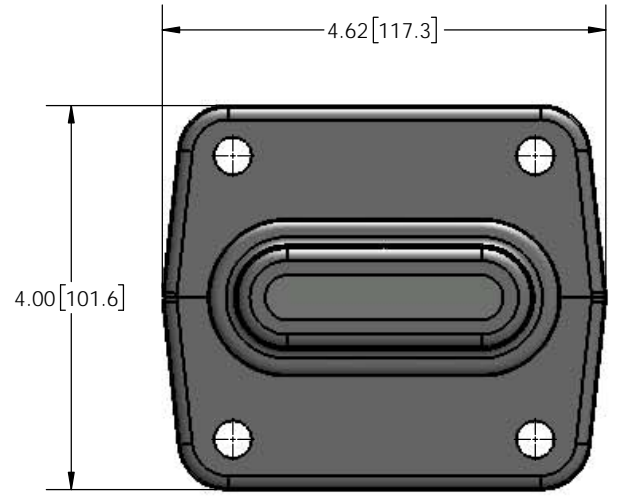
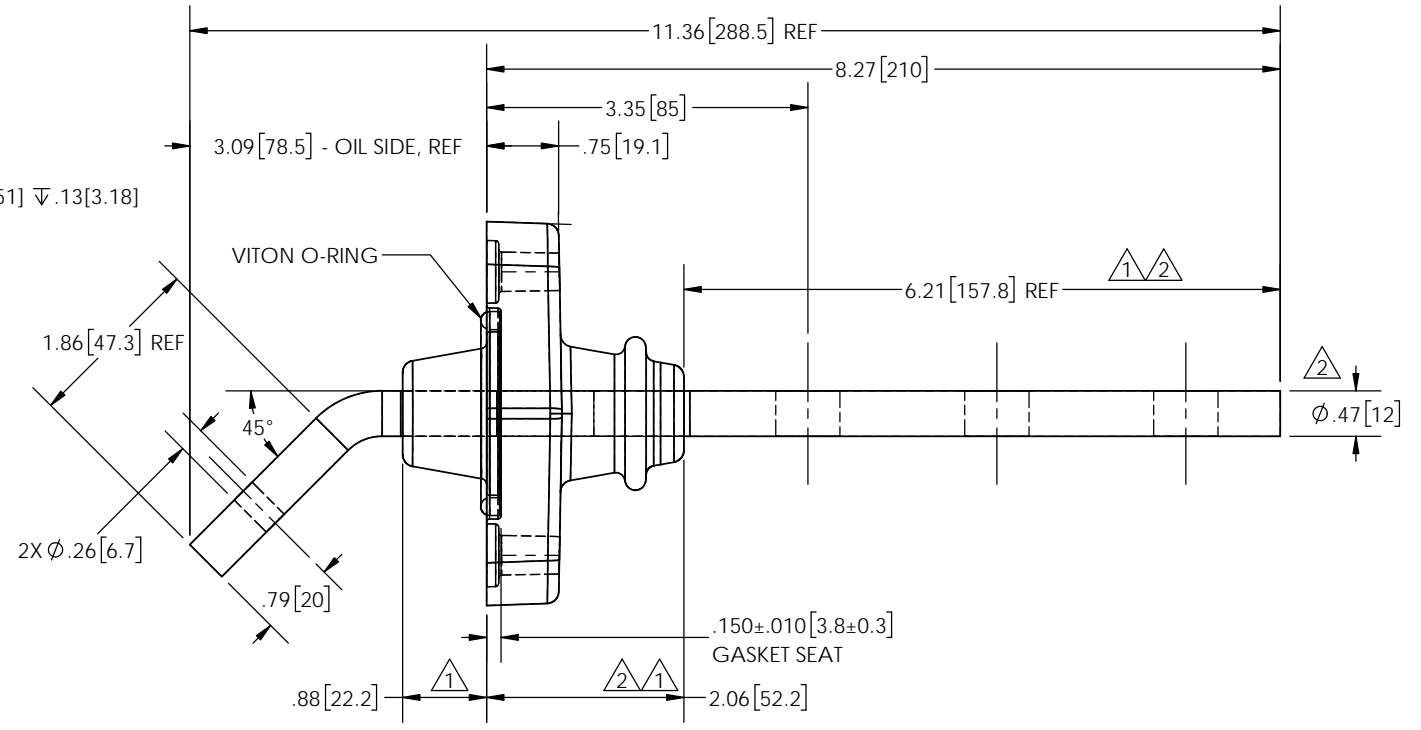
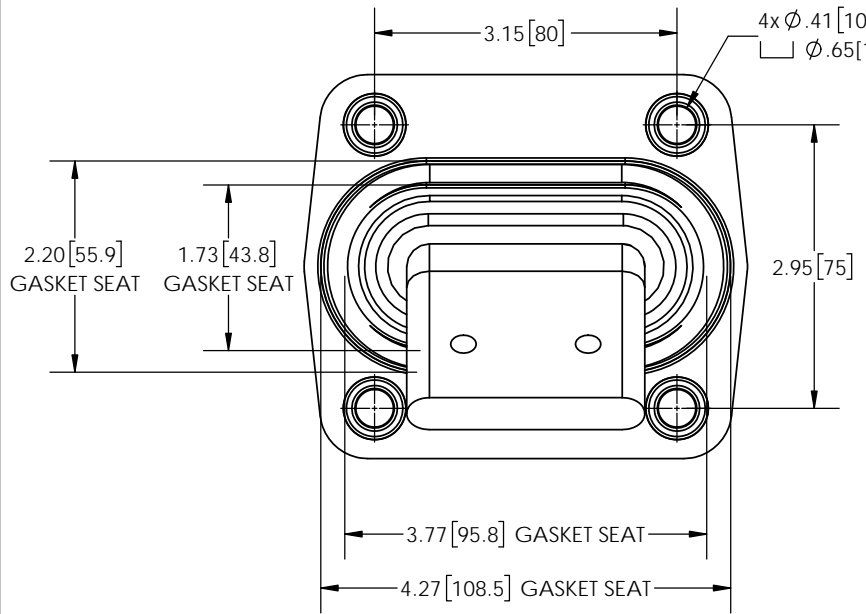
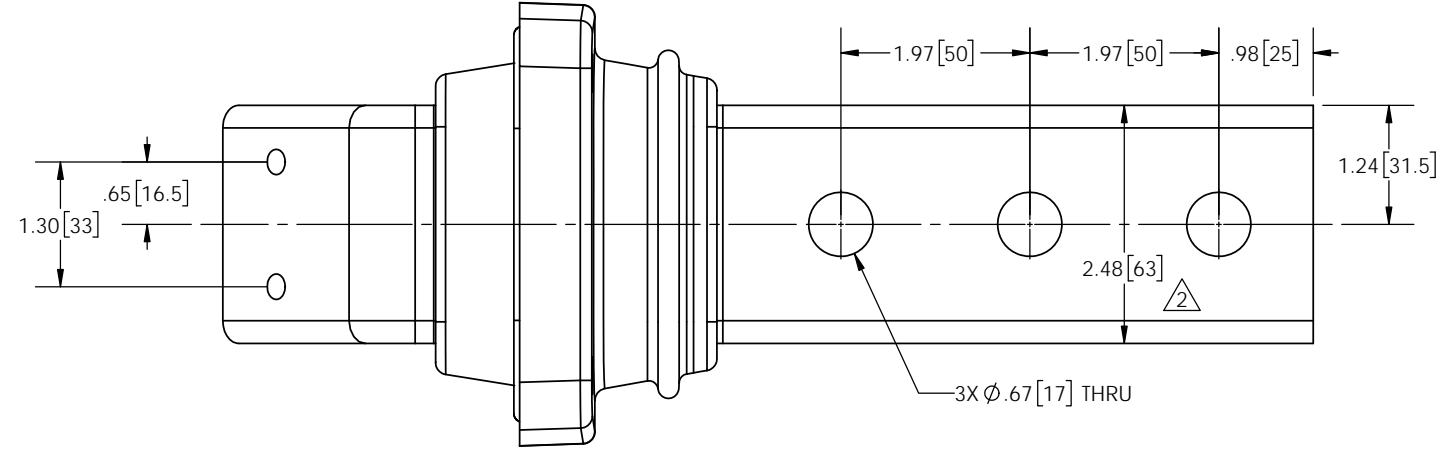


REVISIONS					
NO	DATE	ECN#	REMARKS	BY	APPD.
1	11/25/2013	PQI9822	CHANGED BODY DIMS FROM .69" AND 2.00", ADJUSTED DIMS ACCORDINGLY	CJT	CJT
2	01/21/2015	PQI9822	CHANGED CONDUCTOR TO METRIC STOCK, ADDED SPECIFICATIONS NOTES, LENGTHENED EPOXY & ADDED SHED	CLS	CJT
3	2/26/2018	HJ18-039	CHG'D DESC, WAS 3.0kV -TO-3.6kV	TJF	BLB



**TANK HOLE DIMENSIONS**



- NOTES:**
- ALL UNSPECIFIED RADII TO BE .06 TO .125.
  - ALL CONTACT SURFACES TO BE CLEAN & FREE FROM FLASH.
  - INTERNAL END MUST BE IMMERSSED IN OIL.

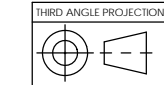
- MATERIAL:**
- E04 - INDOOR EPOXY SYSTEM, GREY
  - CONDUCTOR - C11000 COPPER - TIN PLATED

- SPECIFICATIONS:**
- BASIC IMPULSE LEVEL ..... 30kV
  - MAX CURRENT RATING ..... 1250A
  - TEMPERATURE RANGE ..... -20°C TO 120°C
  - APPROXIMATE WEIGHT ..... 4.5 LBS
  - CANTILEVER OPERATING LOAD ..... 800N
  - CANTILEVER TEST LOAD ..... 1600N
  - MIN CREEP ..... 55mm
  - POWER FREQUENCY WITHSTAND ..... 10kV r.m.s.
  - INSTALLATION TORQUE ..... 7Nm (MAX)
  - MANUFACTURED IN ACCORDANCE WITH EN50387 STANDARD.

**PROPRIETARY AND CONFIDENTIAL**

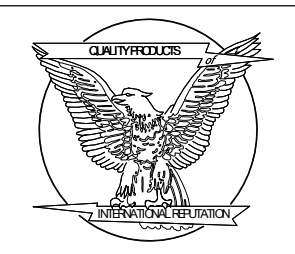
THE INFORMATION CONTAINED IN THIS DRAWING IS THE SOLE PROPERTY OF H-J INTERNATIONAL, INC. ANY REPRODUCTION IN PART OR AS A WHOLE WITHOUT THE WRITTEN PERMISSION OF H-J INTERNATIONAL, INC. IS STRICTLY PROHIBITED.

**BREAK ALL SHARPS UNLESS OTHERWISE NOTED**



**TOLERANCES (EXCEPT AS NOTED)**

ONE PLACE MM ±1.50  
TWO PLACE MM ±0.75  
TWO PLACE DEC. ±0.60  
THREE PLACE DEC. ±0.30  
FRACTIONS ± 1/16"  
ANGLES 2°



APPROVED BY	JDD	DATE	01/21/2015
CHECKED BY	CJT	DATE	01/21/2015
DRAWN BY	BS	DATE	11/04/2013
TOOL NO.	T10-601-0		
PRODUCT GRP.	1000		

**H-J INTERNATIONAL, INC.**  
3010 HIGH RIDGE BLVD, HIGH RIDGE, MO. 63049 USA  
PHONE 1-636-677-3421 FAX 1-636-376-1915

**3.6kV - 30kV BIL LV BUSHING**

**1250A**

DRAWING NO. **10-601-001**

SCALE 1:2 SIZE B REV. 7 SHEET 1 OF 1